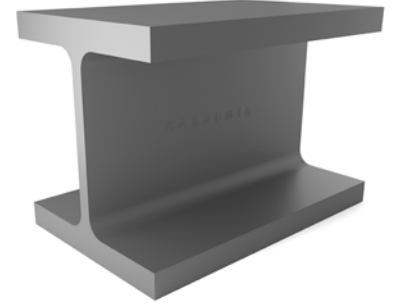
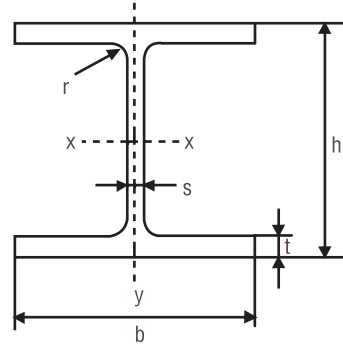


# HEM Profiller - Geniş I Profiller / Takviyeli HEM Profiles - Wide I Profiles / Reinforced

**Boyut Standardı**  
Dimension Standart  
TS EN 10034

**Kalite Standardı**  
Quality Standart  
TS EN 10025-1 / 2



Anma Ölçüsü Nominal Size HEM	Boyutlar ve Toleranslar Dimensions & Tolerances									Kesit Alanı Section	Birim Kütle Unit Mass	Yüzey Alanı Surface Area	Statik Parametreler Static Parameters						$S_x$	$S_x$
	h		b		s		t		r				x-x			y-y				
	h		b		s		t		r				$I_x$ cm <sup>4</sup>	$W_x$ cm <sup>3</sup>	$i_x$ cm	$I_y$ cm <sup>4</sup>	$W_y$ cm <sup>3</sup>	$i_y$ cm		
120	140	+3/-2	126	+4/-2	12,5	±1,5	21,0	+2,5/-2,0	12,0	66,4	52,1	0,738	2020	288	5,51	703	112	3,25	175	11,5
140	160	+3/-2	146	+4/-2	13,0	±1,5	22,0	+2,5/-2,0	12,0	80,6	63,2	0,857	3290	411	6,39	1140	157	3,77	247	13,3
160	180	+3/-2	166	+4/-2	14,0	±1,5	23,0	+2,5/-2,0	15,0	97,1	76,2	0,970	5100	566	7,25	1760	212	4,26	337	15,1
180	200	+4/-2	186	+4/-2	14,5	±1,5	24,0	+2,5/-2,0	15,0	113,0	88,9	1,09	7480	748	8,13	2580	277	4,77	442	16,9
200	220	+4/-2	206	+4/-2	15,0	±1,5	25,0	+2,5/-2,0	18,0	131,0	103,0	1,20	10640	967	9,00	3650	354	5,27	568	18,7
220	240	+4/-2	226	+4/-4	15,5	±1,5	26,0	+2,5/-2,0	18,0	149,0	117,0	1,32	14600	1220	9,89	5010	444	5,79	710	20,6
240	270	+4/-2	248	+4/-4	18,0	±1,5	32,0	+2,5/-2,5	21,0	200,0	157,0	1,46	24290	1800	11,00	8150	657	6,39	1060	22,9
260	290	+4/-2	268	+4/-4	18,0	±1,5	32,5	+2,5/-2,5	24,0	220,0	172,0	1,57	31310	2160	11,90	10450	780	6,90	1260	24,8
280	310	+4/-2	288	+4/-4	18,5	±1,5	33,0	+2,5/-2,5	24,0	240,0	189,0	1,69	39550	2550	12,80	13160	914	7,40	1480	26,7
300	340	+4/-2	310	+4/-4	21,0	±2,0	39,0	+2,5/-2,5	27,0	303,0	238,0	1,83	59200	3480	14,00	19400	1250	8,00	2040	29,0

$I$  : Atalet momenti Moment of Inertia

$W$  : Kesit modülü Section modulus

$i$  : Atalet yarıçapları (ait olduğu eğme eksenlerine göre) Radius of gyration (subscript x and y denoting the relevant axis)

$S_x$  : Yarım kesitin statik momenti Moment of first order of half the cross section

$S_x = i_x \cdot S_y$  : Basma ve çekme merkezleri arasındaki mesafe Distance between centers of compression and tension.

Kesit, ağırlık, toplam yüzey alanları ile statik değerler çizelgede gösterilen boyutlara göre hesaplanmıştır. Section, weight, surface area and statical values are calculated according to the values in the table.