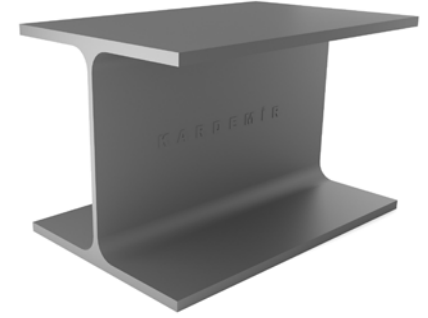
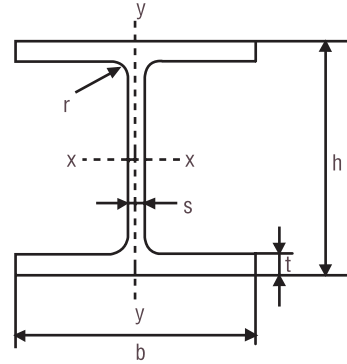


HEA Profiller

HEA Profiles

Boyut Standardı
Dimension Standart
TS EN 10034

Kalite Standardı
Quality Standart
TS EN 10025-1 / 2



Anma Ölçüsü Nominal Size HEA	Boyutlar ve Toleranslar Dimensions & Tolerances									Kesit Alanı Section	Birim Kütle Unit Mass	Yüzey Alanı Surface Area	Statik Parametreler Static Parameters						S_x	S_y	
	h		b		s		t		r				x-x			y-y					
	h		b		s		t		r					I_x	W_x	i_x	I_y	W_y			i_y
120	114	+3/-2	120	+4/-2	5,0	±0,7	8,0	+2/-1	12,0	25,3	19,9	0,677	606	106	4,89	231	38,5	3,02	59,7	10,1	
140	133	+3/-2	140	+4/-2	5,5	±0,7	8,5	+2/-1	12,0	31,4	24,7	0,794	1030	155	5,73	389	55,6	3,52	86,7	11,9	
160	152	+3/-2	160	+4/-2	6,0	±0,7	9,0	+2/-1	15,0	38,8	30,4	0,906	1670	220	6,57	616	76,9	3,98	123,0	13,6	
180	171	+3/-2	180	+4/-2	6,0	±0,7	9,5	+2/-1	15,0	45,3	35,5	1,02	2510	294	7,45	925	103,0	4,52	162,0	15,5	
200	190	+4/-2	200	+4/-2	6,5	±0,7	10,0	+2,5/-1,5	18,0	53,8	42,3	1,14	3690	389	8,28	1340	134,0	4,98	215,0	17,2	
220	210	+4/-2	220	+4/-4	7,0	±1,0	11,0	+2,5/-1,5	18,0	64,3	50,5	1,26	5410	515	9,17	1950	178,0	5,51	284,0	19,0	
240	230	+4/-2	240	+4/-4	7,5	±1,0	12,0	+2,5/-1,5	21,0	76,8	60,3	1,37	7660	675	10,10	2770	231,0	6,00	372,0	20,9	
260	250	+4/-2	260	+4/-4	7,5	±1,0	12,5	+2,5/-1,5	24,0	86,8	68,2	1,48	10450	836	11,0	3670	282,0	6,50	460,0	22,7	
280	270	+4/-2	280	+4/-4	8,0	±1,0	13,0	+2,5/-1,5	24,0	97,3	76,4	1,60	13670	1010	11,9	4760	340,0	7,00	556,0	24,6	
300	290	+4/-2	300	+4/-4	8,5	±1,0	14,0	+2,5/-1,5	27,0	112,0	88,3	1,72	18260	1260	12,7	6310	421,0	7,49	692,0	26,4	
320	310	+4/-2	300	+4/-4	9	±1,0	15,5	+2,5/-1,5	27,0	124,0	97,6	1,76	22930	1480	13,6	6990	466,0	7,49	814,0	28,2	
340	330	+4/-2	300	+4/-4	9,5	±1,0	16,5	+2,5/-1,5	27,0	133,0	105,0	1,79	27690	1680	14,4	7440	496,0	7,46	925,0	29,9	
360	350	+4/-2	300	+4/-4	10	±1,5	17,5	+2,5/-1,5	27,0	143,0	112,0	1,83	33090	1890	15,2	7890	526,0	7,43	1040,0	31,7	
400	390	+4/-2	300	+4/-4	11	±1,5	19	+2,5/-1,5	27,0	159,0	125,0	1,91	45070	2310	16,8	8560	571,0	7,34	1280,0	35,2	
450	440	+5/-3	300	+4/-4	11,5	±1,5	21	+2,5/-2,0	27,0	178,0	140,0	2,01	63720	2900	18,9	9470	631,0	7,29	1610,0	39,6	
500	490	+5/-3	300	+4/-4	12	±1,5	23	+2,5/-2,0	27,0	198,0	155,0	2,11	86970	3550	21,0	10370	691,0	7,24	1970,0	44,1	

I : Atalet momenti *Moment of Inertia*

W : Kesit modülü *Section modulus*

i : Atalet yarıçapları (ait olduğu eğme eksenlerine göre) *Radii of gyration (subscript x and y denoting the relevant axis)*

S_x, S_y : Yarım kesitin statik momenti *Moment of first order of half the cross section*

$S_x = -S_y$: Basma ve çekme merkezleri arasındaki mesafe *Distance between centers of compression and tension.*

Kesit, ağırlık, toplam yüzey alanları ile statik değerler çizelgede gösterilen boyutlara göre hesaplanmıştır. *Section, weight, surface area and static values are calculated according to the values in the table.*